



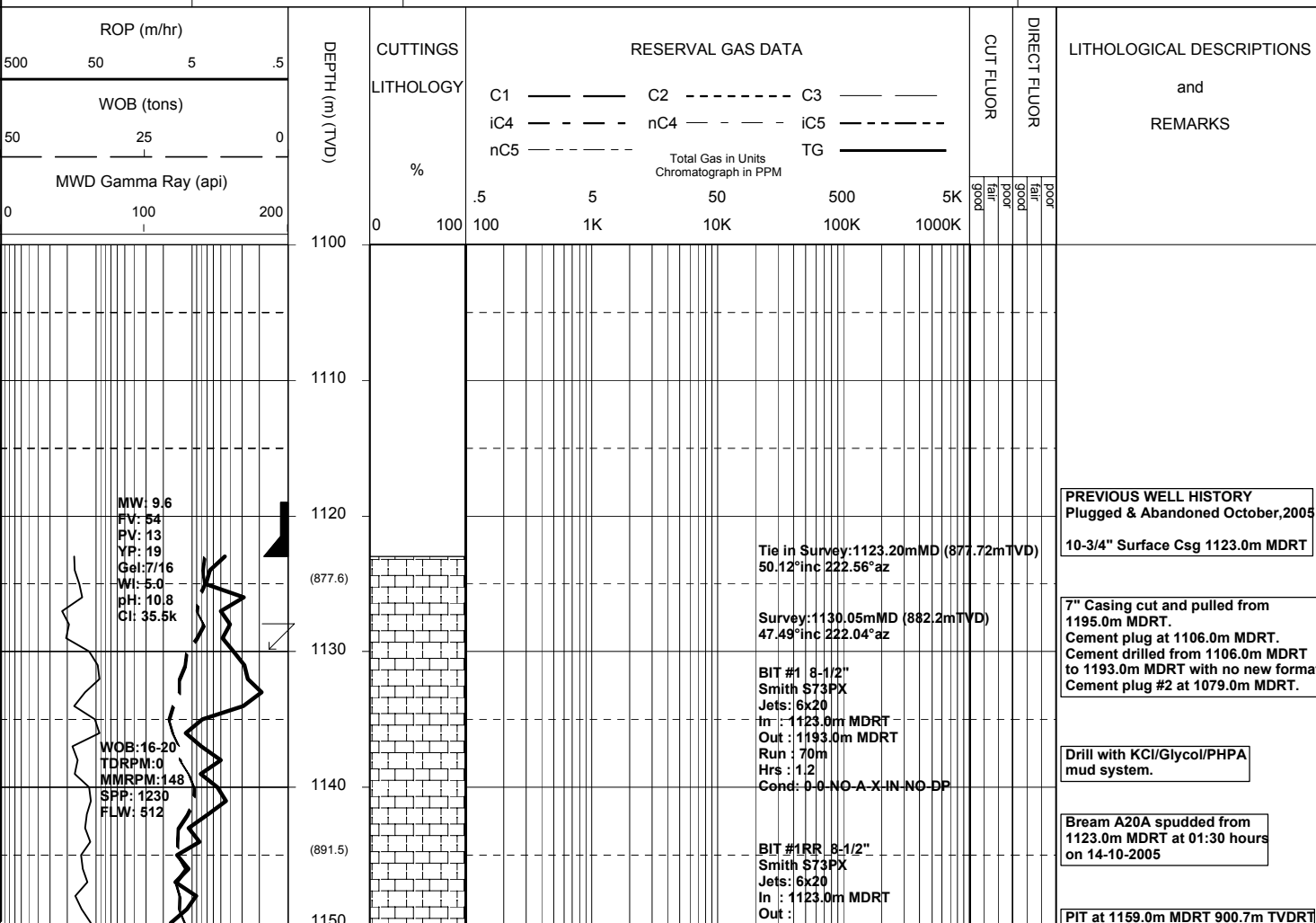
MASTERLOG

BMA A20A



GENERAL	POSITION	HOLE / CASING INFO	DATE / DEPTH	ENGINEERS
Country : AUSTRALIA	GDA Co-ord X : 147 46 20.056 E		Spud Date : 14-10-2005	Mark Smith
Permit : VIC L13	GDA Co-ord Y : 38 29 58.899 S	8-1/2" Hole to	Total Depth Date :	V.B. Jagarlamudi
Field : Bream	MGA Co-ord X : 567338.25mE		Total Depth :	Steve Oades
Basin : GIPPSLAND	MGA Co-ord Y : 5738458.02mN	10-3/4" Surface Csg at 1123.0 mMDRT	True Vertical Depth :	
Well Type : DEVELOPMENT	RT to MSL : 32.82 m	7" Production Csg at	Log Scale : 1/ 500	
Rig Name : NABORS 453	RT to Sea Bed : 92.22 m			

ABBREVIATIONS		LITHOLOGY LEGEND				ENGINEERING LEGEND	
MW Mud Weight	WOB Weight on Bit (klbs)	CLAYSTONE	MARL	BRYOZOA	CARB FRAGMENT	CASING SHOE	WIRELINE LOGS
FV Funnel Viscosity	RPM Rotations Per Min	SILTSTONE	LIMESTONE	RADIOLARITES	QUARTZITE	LINER HANGER	MDT POINTS:
PV Plastic Viscosity	FLW Flow Rate (gpm)	SST: F - V FINE	DOLOMITE	ECHINOIDS	INTRUSIVES	BIT CHANGE	PRESSURE ONLY
YP Yield Point	SPP Pump Pressure (psi)	SST: MEDIUM	CHERT	CORALS	GLAUCONITE	DEVIA. SURVEY	SAMPLE
Gel Gel Strength	RR Re-Run Bit	SST: COARSE	CONGLOMERATE	FORAMINIFERA	PYRITE	SWC UNRECOV	SEAL FAILURE
WL Water Loss	TG Trip Gas	SHALE	COAL	LITHIC FRAGMENT	CEMENT	SIDEWALL CORE	TIGHT
KCl Potassium Chloride	CG Connection Gas					CORE	
Cl Chlorides	BG Background Gas						
Incl Inclination	DGP Drilled Gas Peak						
Az Azimuth	MM Mud Motor						



Run :
Hrs :
Cond:

WOB: 5-10
TDRPM: 60
MMRPM: 153
SPP: 1500
FLW: 528

Survey: 1158.55mMD (902.6mTVD)
41.35°inc 225.01°az

CALCILUTITE:lt gy-med lt gy,sity
i/p g/t CLSLT,tr foram,frm-mod hd,
sbbiky.

WOB: 5-20
TDRPM: 60
MMRPM: 153
SPP: 1850
FLW: 605

99 / 1 / Tr

(921.6)

Survey: 1186.68mMD (924.5mTVD)
36.10°inc 221.21°az

CALCILUTITE:lt gy-med lt gy,sity
i/p g/t CLSLT,tr foram,frm-mod hd,
sbbiky.

99 / 1 / Tr

WOB: 7-12
TDRPM: 62
MMRPM: 178
SPP: 2050
FLW: 613

Survey: 1215.77mMD (948.2mTVD)
35.19°inc 227.08°az

99 / 1 / Tr

(954.1)

CALCILUTITE:lt gy-med lt gy,sity
i/p g/t CLSLT,tr foram,frm-mod hd,
sbbiky.

WOB: 6-22
TDRPM: 60
MMRPM: 177
SPP: 2075
FLW: 608

Survey: 1244.76mMD (972.1mTVD)
33.70°inc 227.07°az

99 / 1 / Tr

(970.6)

MW: 9.6
FV: 76
PV: 30
YP: 44
Gel: 10/22
WI: 4.0
pH: 11.7
Cl: 35.5K

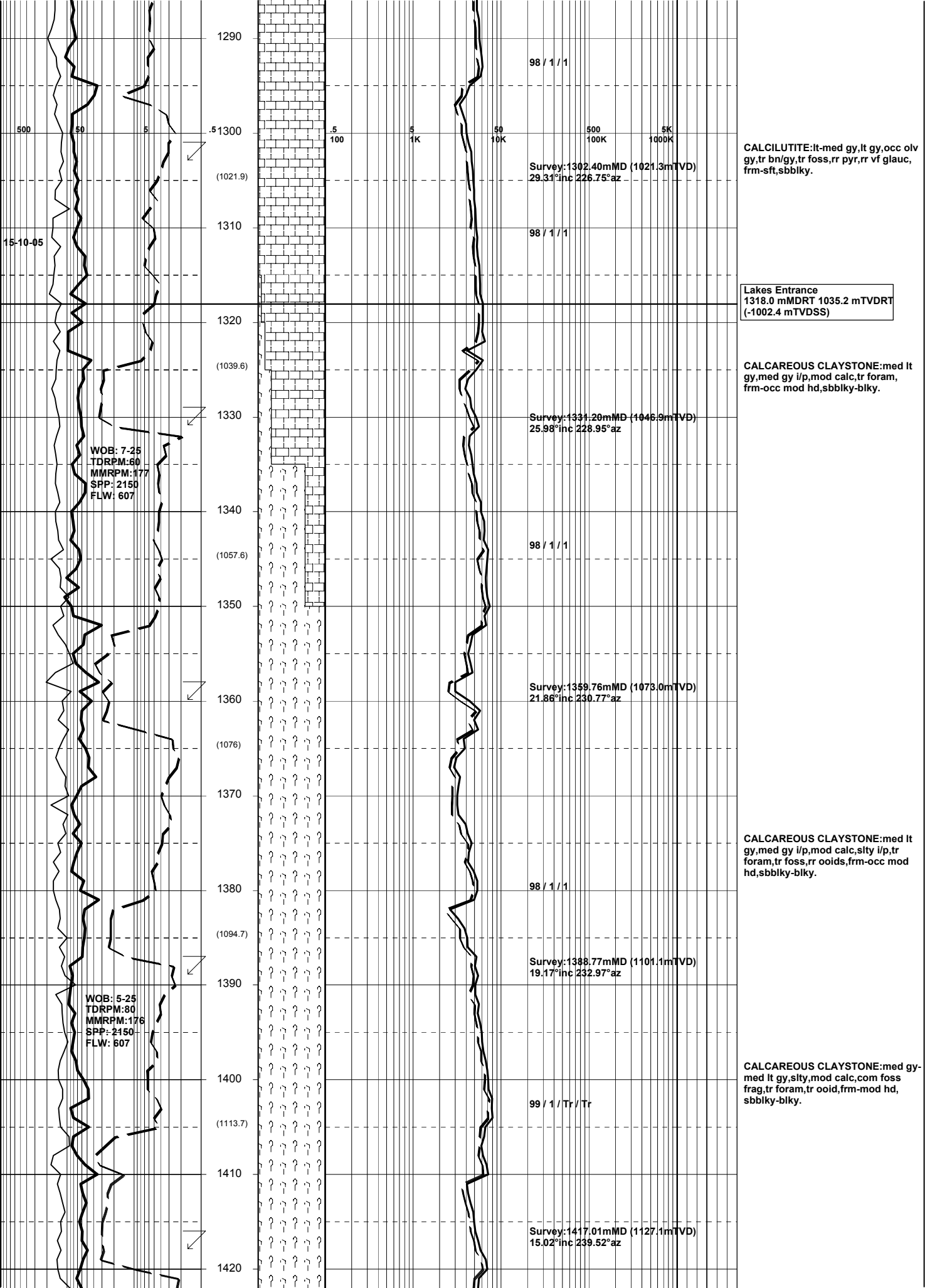
Survey: 1273.63mMD (996.5mTVD)
30.94°inc 226.91°az

CALCILUTITE:lt gy-med lt gy,sity
i/p g/t CLSLT,tr foram,tr bnsh/gy
foss,frm-mod hd,sbbiky,tr sbfiss.

(987.5)

1280

(1004.6)



1290
1300
1310
1320
1330
1340
1350
1360
1370
1380
1390
1400
1410
1420

500 50 5

15-10-05

WOB: 7-25
TDRPM: 60
MMRPM: 177
SPP: 2150
FLW: 607

WOB: 5-25
TDRPM: 80
MMRPM: 176
SPP: 2150
FLW: 607

98 / 1 / 1

Survey: 1302.40mMD (1021.3mTVD)
29.31°inc 226.75°az

98 / 1 / 1

CALCILUTITE:lt-med gy,lt gy,occ olv gy,tr bn/gy,tr foss,rr pyr,rr vf glauc, frm-sft,sbbiky.

Lakes Entrance
1318.0 mMDRT 1035.2 mTVDRT
(-1002.4 mTVDSS)

CALCAREOUS CLAYSTONE:med lt gy,med gy i/p,mod calc,tr foram, frm-occ mod hd,sbbiky-blky.

Survey: 1331.20mMD (1046.9mTVD)
25.98°inc 228.95°az

98 / 1 / 1

Survey: 1359.76mMD (1073.0mTVD)
21.86°inc 230.77°az

CALCAREOUS CLAYSTONE:med lt gy,med gy i/p,mod calc,sity i/p,tr foram,tr foss,rr ooids,frm-occ mod hd,sbbiky-blky.

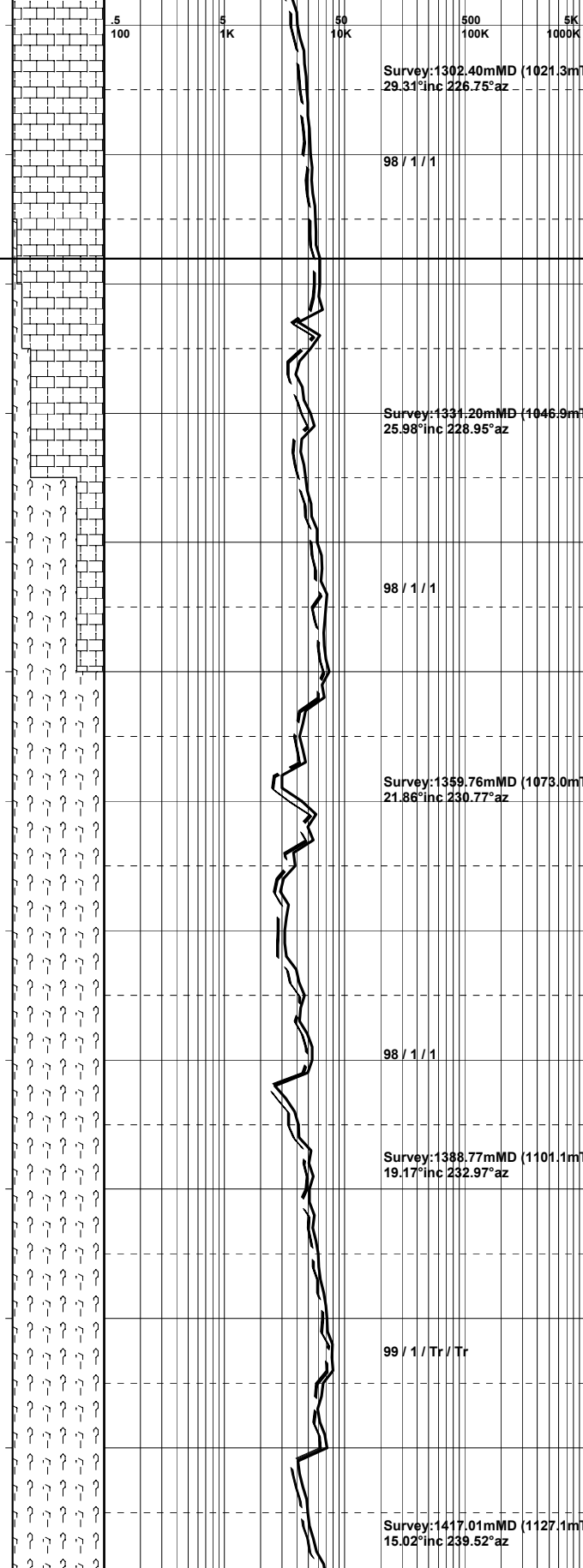
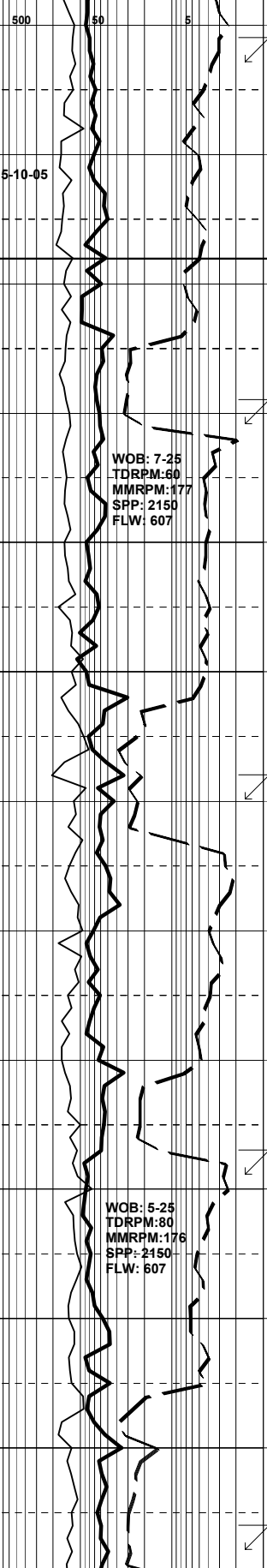
98 / 1 / 1

Survey: 1388.77mMD (1101.1mTVD)
19.17°inc 232.97°az

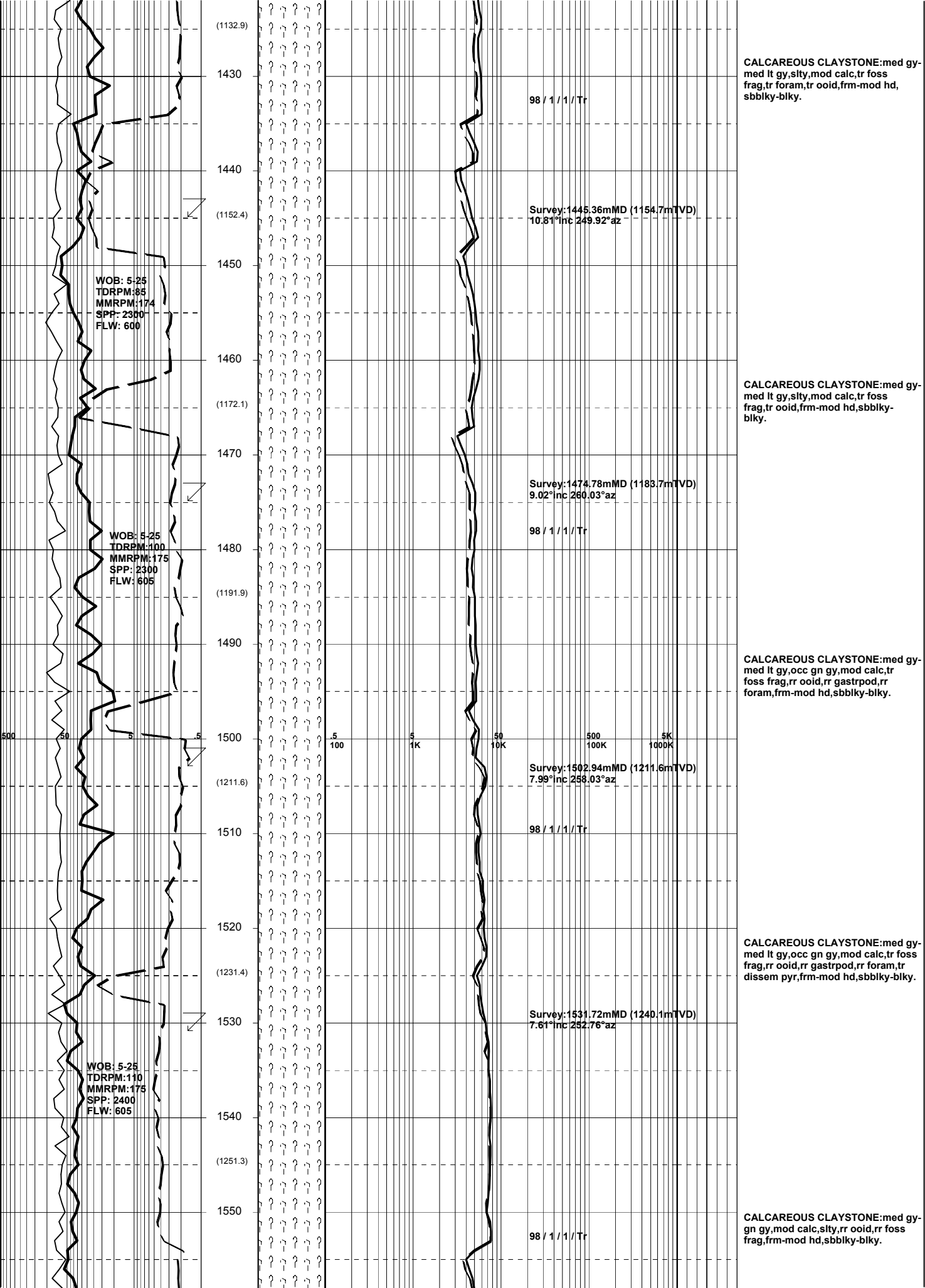
CALCAREOUS CLAYSTONE:med gy-med lt gy,sity,mod calc,com foss frag,tr foram,tr ooid,frm-mod hd,sbbiky-blky.

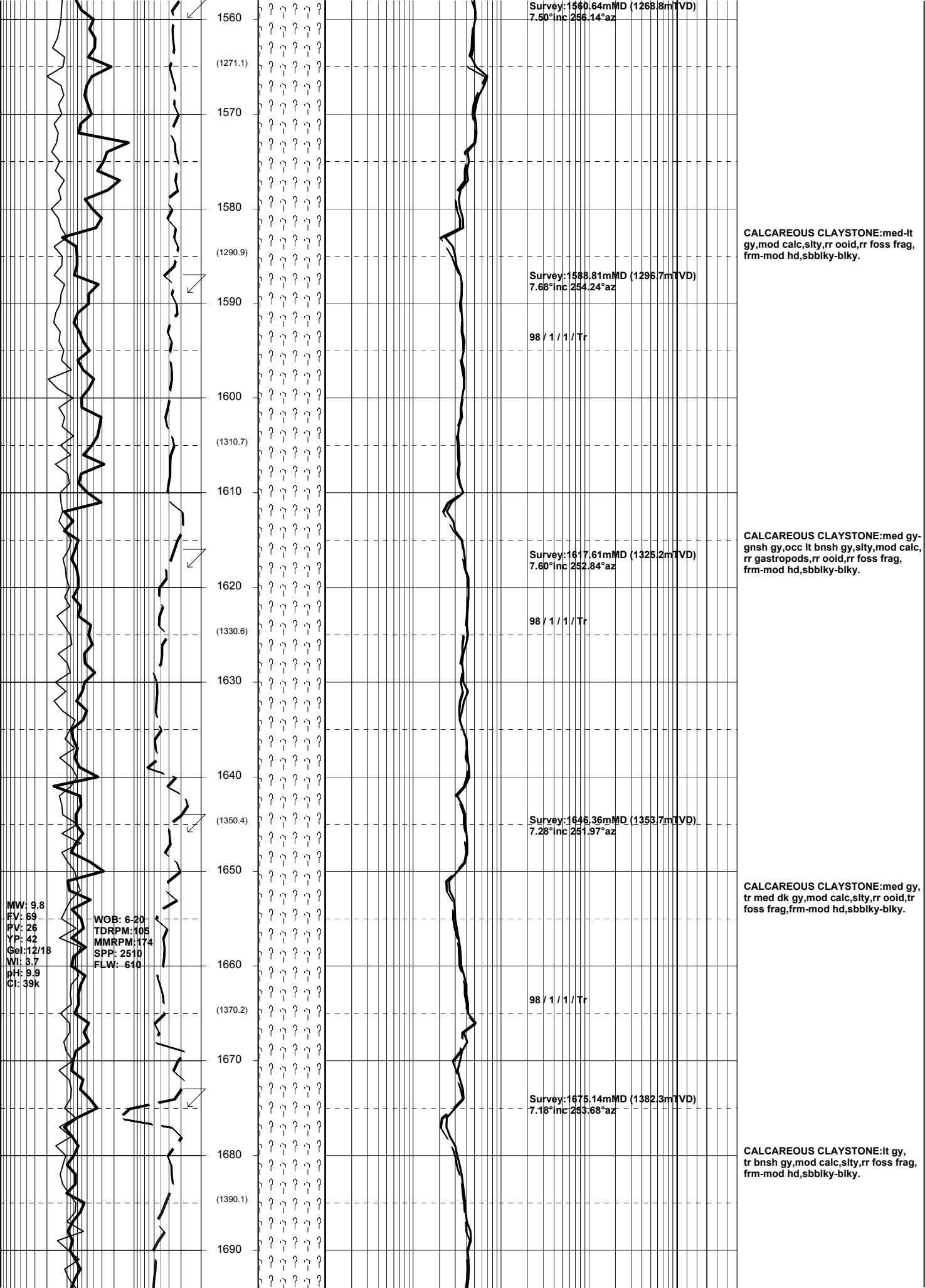
99 / 1 / Tr / Tr

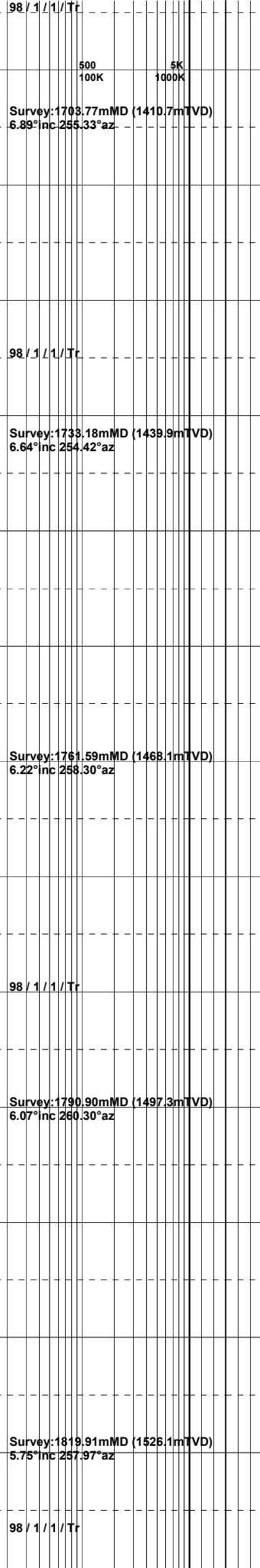
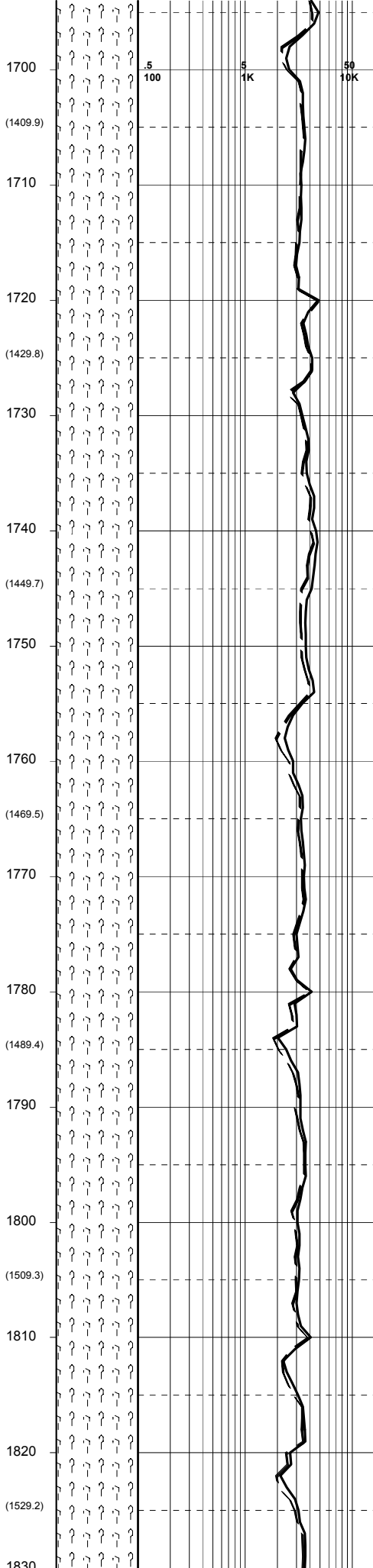
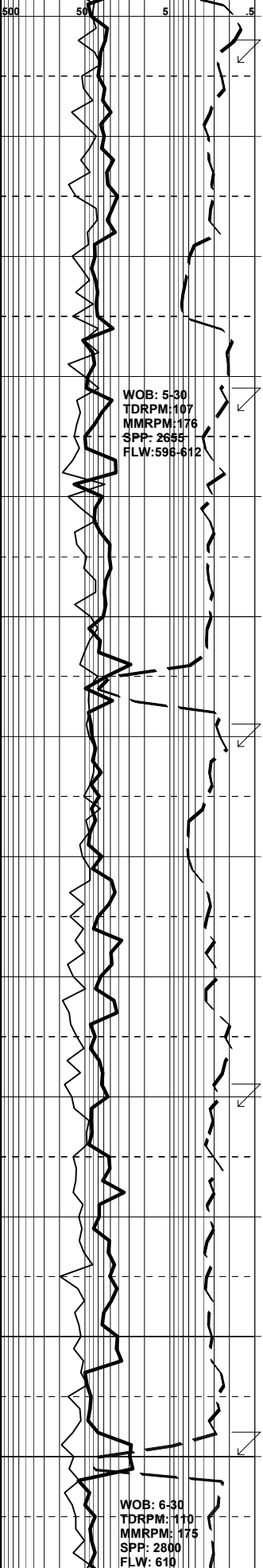
Survey: 1417.01mMD (1127.1mTVD)
15.02°inc 239.52°az



500 50 5K 100K 1000K
100 1K 10K







Survey: 1703.77mMD (1410.7mTVD)
6.89°inc 255.33°az

Survey: 1733.18mMD (1439.9mTVD)
6.64°inc 254.42°az

Survey: 1761.59mMD (1468.1mTVD)
6.22°inc 258.30°az

Survey: 1790.90mMD (1497.3mTVD)
6.07°inc 260.30°az

Survey: 1819.91mMD (1526.1mTVD)
5.75°inc 267.97°az

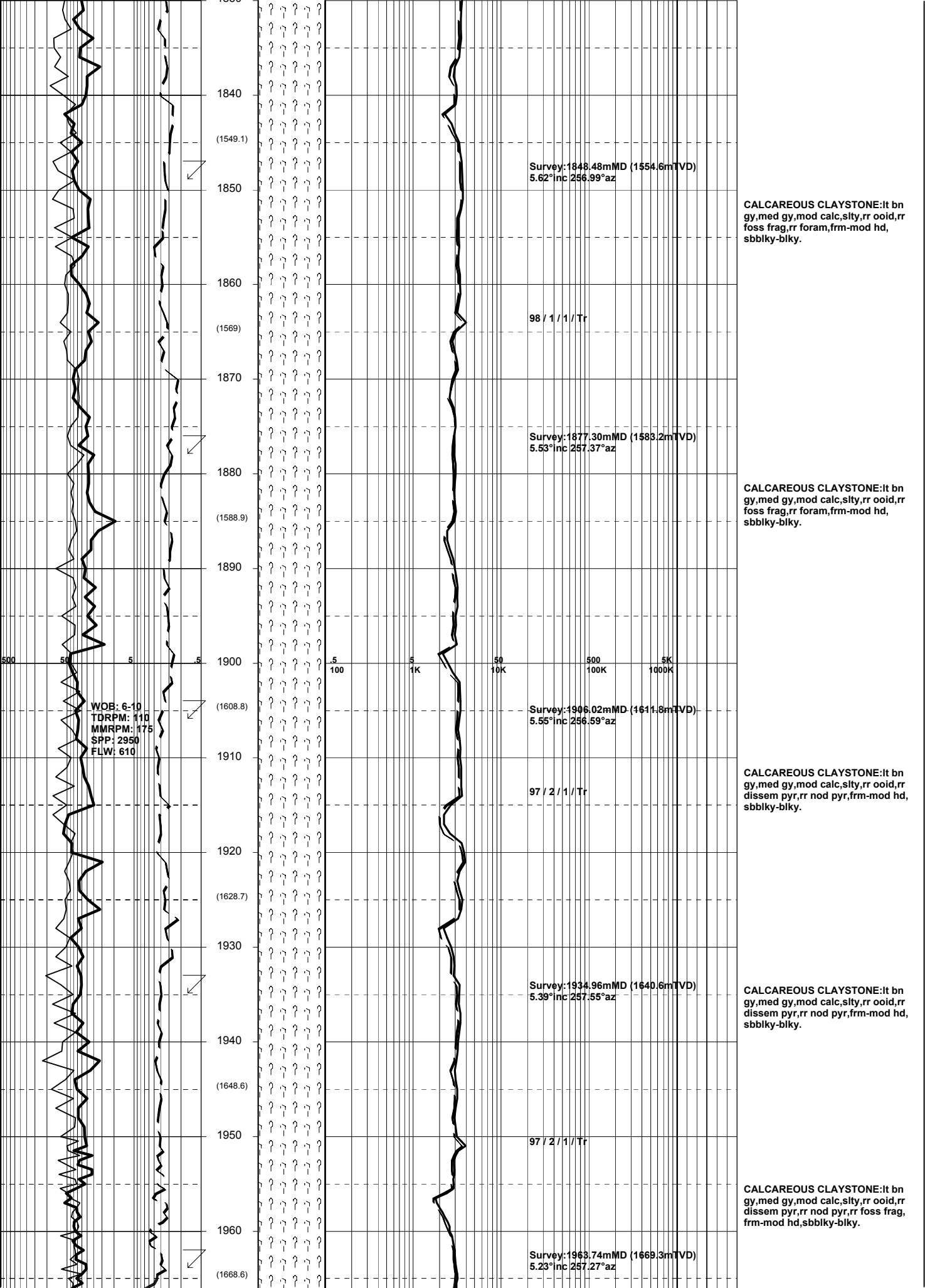
CALCAREOUS CLAYSTONE:lt gy,
tr bnsh gy,tr med dk gy,mod calc,sity,
rr foss frag,tr nod & dissem pyr,tr
glauc pell,frm-mod hd,sbblky-blky.

CALCAREOUS CLAYSTONE:lt gy,
tr bnsh gy,mod calc,sity,rr foss frag,
frm-mod hd,sbblky-blky.

CALCAREOUS CLAYSTONE:lt gy,
occ lt bn/gy,mod calc,sity,tr micmic,
tr foss frag,tr ooid,tr foram,frm-
mod hd,sbblky-blky.

CALCAREOUS CLAYSTONE:lt bn
gy,med gy,mod calc,sity,tr ooid,rr
foss frag,rr pyr nod,rr dissem pyr,
frm-mod hd,sbblky-blky.

CALCAREOUS CLAYSTONE:lt bn
gy,med gy,mod calc,sity,tr ooid,rr
foss frag,rr pyr nod,rr dissem pyr,
tr foram,frm-mod hd,sbblky-blky.



1830
1840
(1549.1)
1850
1860
(1569)
1870
1880
(1588.9)
1890
1900
(1608.8)
1910
1920
(1628.7)
1930
1940
(1648.6)
1950
1960
(1668.6)

Survey: 1848.48mMD (1554.6mTVD)
5.62°inc 256.99°az

98 / 1 / 1 / Tr

Survey: 1877.30mMD (1583.2mTVD)
5.53°inc 257.37°az

Survey: 1906.02mMD (1611.8mTVD)
5.55°inc 256.59°az

97 / 2 / 1 / Tr

Survey: 1934.96mMD (1640.6mTVD)
5.39°inc 257.55°az

97 / 2 / 1 / Tr

Survey: 1963.74mMD (1669.3mTVD)
5.23°inc 257.27°az

CALCAREOUS CLAYSTONE:It bn
gy,med gy,mod calc,silty,rr ooid,rr
foss frag,rr foram,frm-mod hd,
sbbiky-blky.

CALCAREOUS CLAYSTONE:It bn
gy,med gy,mod calc,silty,rr ooid,rr
foss frag,rr foram,frm-mod hd,
sbbiky-blky.

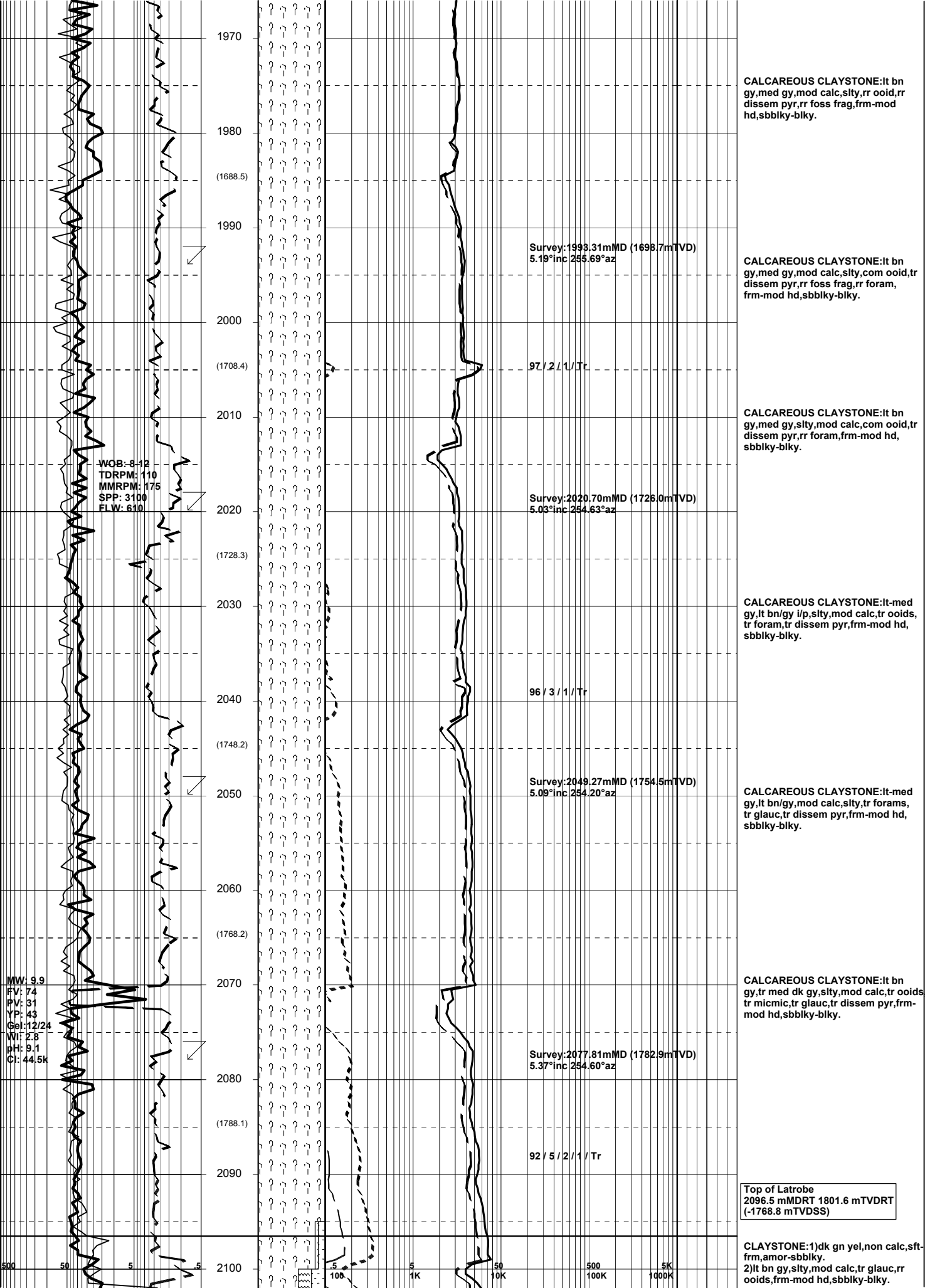
CALCAREOUS CLAYSTONE:It bn
gy,med gy,mod calc,silty,rr ooid,rr
dissem pyr,rr nod pyr,frm-mod hd,
sbbiky-blky.

CALCAREOUS CLAYSTONE:It bn
gy,med gy,mod calc,silty,rr ooid,rr
dissem pyr,rr nod pyr,frm-mod hd,
sbbiky-blky.

CALCAREOUS CLAYSTONE:It bn
gy,med gy,mod calc,silty,rr ooid,rr
dissem pyr,rr nod pyr,rr foss frag,
frm-mod hd,sbbiky-blky.

WOB: 6-10
TDRPM: 110
MMRPM: 175
SPP: 2950
FLW: 610

5 5 50 500 5K
100 1K 10K 100K 1000K



WOB: 6-12
 TDRPM: 110
 MMRPM: 175
 SPP: 3100
 FLW: 610

MW: 9.9
 FV: 74
 PV: 31
 YP: 43
 Gel: 12/24
 Wt: 2.8
 pH: 9.1
 Cl: 44.5k

CALCAREOUS CLAYSTONE: It bn gy, med gy, mod calc, slty, rr ooid, rr dissem pyr, rr foss frag, rr frm-mod hd, sbbiky-blky.

CALCAREOUS CLAYSTONE: It bn gy, med gy, mod calc, slty, com ooid, rr dissem pyr, rr foram, rr frm-mod hd, sbbiky-blky.

CALCAREOUS CLAYSTONE: It bn gy, med gy, slty, mod calc, com ooid, rr dissem pyr, rr foram, rr frm-mod hd, sbbiky-blky.

CALCAREOUS CLAYSTONE: It-med gy, It bn/gy i/p, slty, mod calc, tr ooids, tr foram, tr dissem pyr, rr frm-mod hd, sbbiky-blky.

CALCAREOUS CLAYSTONE: It-med gy, It bn/gy, mod calc, slty, tr forams, tr glauc, tr dissem pyr, rr frm-mod hd, sbbiky-blky.

CALCAREOUS CLAYSTONE: It bn gy, tr med dk gy, slty, mod calc, tr ooids, tr micmic, tr glauc, tr dissem pyr, rr frm-mod hd, sbbiky-blky.

Top of Latrobe
 2096.5 mMDRT 1801.6 mTVDRT
 (-1768.8 mTVDSS)

CLAYSTONE: 1) dk gn yel, non calc, sft-frm, amor-sbbiky.
 2) It bn gy, slty, mod calc, tr glauc, rr ooids, rr frm-mod hd, sbbiky-blky.



WOB: 5-8
TDRPM: 106
MMRPM: 176
SPP: 2920
FLW: 606

(1808)
2110
2120
(1827.9)
2130
2140
(1847.8)
2150
2160
(1867.7)
2170
2180
(1887.6)

Survey: 2106.43mMD (1811.4mTVD)
5.47° inc 255.61° az

83 / 8 / 5 / 3 / 1

Survey: 2134.94mMD (1839.8mTVD)
5.59° inc 253.27° az

86 / 7 / 4 / 2 / 1

Survey: 2163.87mMD (1868.6mTVD)
5.60° inc 251.38° az

SILTSTONE: pl bn, dk yel bn, v aren g/t
vf SST, sli calc, tr micmic, mod hd,
blky.

SANDSTONE: wh-pl gn, med gn, vf-f,
mod wl srt, sa-sr, com glauc mtx, hd
aggs, ti-v pr vis & inf por, no fluor.

SILTSTONE: mod bn-dk yel bn, v aren
g/t vf SST, com glauc pels, tr micmic,
mod hd, blky.

SANDSTONE: wh-pl gn, mod gn, vf-f,
mod wl srt, sa-sr, com glauc mtx, hd
aggs, ti-v pr inf por, no fluor.

VOLCANICS: gysh gn-gy blu gn, dom
chlorite, xln, hd, com bit crushed to
rock flour.

SANDSTONE: wh-v pl gn, occ med gy,
vf-f, mod wl srt, sa-sr, com glauc mtx,
occ micr pyr mtx, tr nod pyr, hd aggs,
ti-v pr inf & vis por, no fluor.

